

Individual Electric Vehicle simulation>

[Download here!](#)

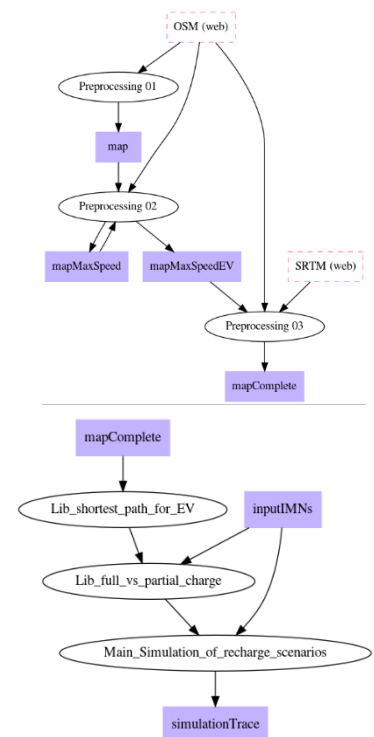
An open-source implementation of algorithms for simulating a user's mobility in the scenario where they are using Electric Vehicles instead of internal combustion ones.

Code Workflow

The code implements two phases.

The first phase is a one-shot preprocessing aimed to build a road network with all information needed to compute travel times, distances, and battery consumption. This phase also takes care of downloading data from OpenStreetMap (OSM) and Shuttle Radar Topography Mission data (SRTM).

The second phase implement the simulation of individual users, taking as input their IMNs (see the section for IMNs in this repository) and the map computed above.



[>> More Info](#)